

# IT STARTS WITH ONE

**JUNE 3-6, 2019 • PHILADELPHIA • #BIO2019**



# Getting to grips with data quality issues through international neuroscience initiatives

Pierre Meulien, Executive Director of  
the Innovative Medicines Initiative (IMI)

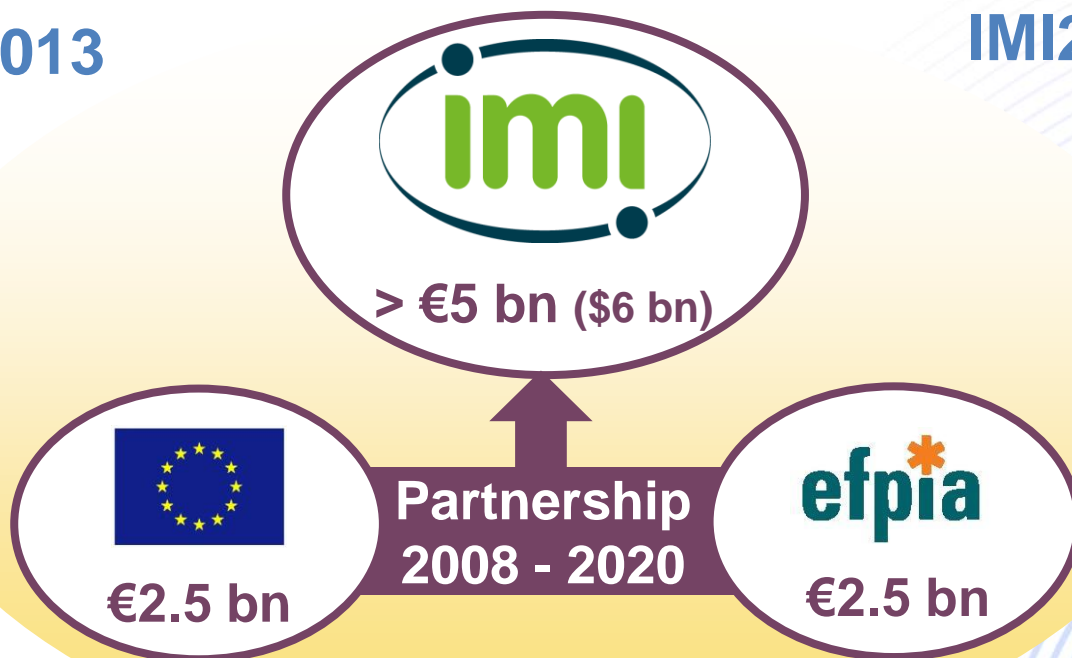
# IMI – Europe's partnership for health

## IMI1: 2008-2013

€2 bn (\$2.4 bn)  
59 projects

## IMI2: 2014-2020

€3.3 bn (\$4 bn)  
More ambitious  
More open  
Greater scope



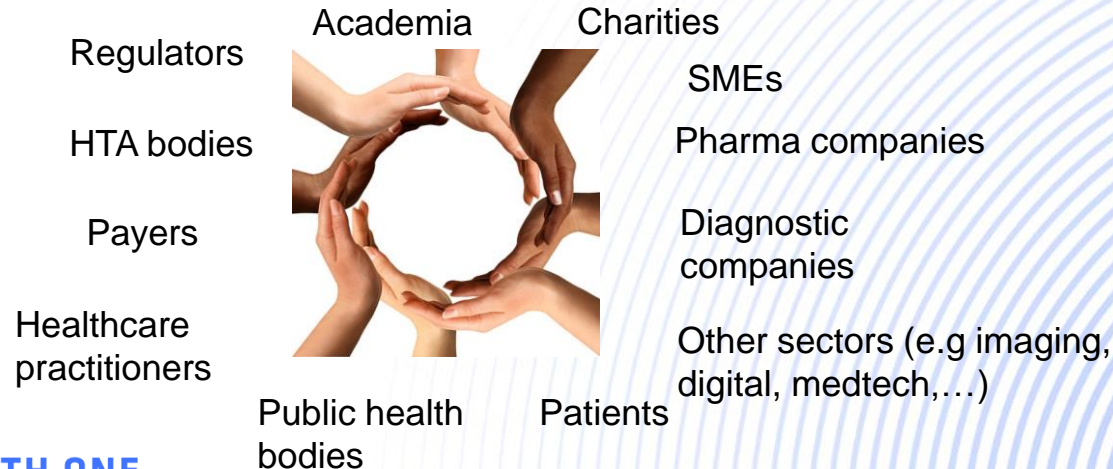


# IMI – Ecosystem for innovative collaborations

IMI is a **neutral platform** where **all involved** in drug development can engage in **open collaboration** on **shared challenges** in areas of **unmet medical needs**.

All partners needed to find transformative solutions to **reduce late stage attrition**, **speed patient access** and **improve health outcomes** and find solutions for a sustainable healthcare system

**Over 11 500  
researchers from an  
international, cross-  
sector community**



# Our Panelists

- **Dr Emily Sena**

*BMJ Open Science, & Postdoctoral Research Fellow, University of Edinburgh*

- **Dr Shai Silberberg**

*Director of Research Quality, NIH National Institute of Neurological Disorders and Stroke (NINDS)*

- **Dr Thomas Steckler**

*Associate Director, Bioresearch and Quality and Compliance, Quality Planning & Strategy, Animal Welfare Strategy Lead, Janssen Pharmaceutica NV, Johnson & Johnson*