

IT STARTS WITH ONE

JUNE 3-6, 2019 • PHILADELPHIA • #BIO2019

Meta-research to drive improvements of the modelling of human diseases

Emily Sena
University of Edinburgh
@drEmilySena

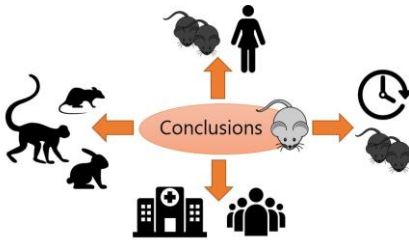
Disclosures

- Editor-in-Chief of **BMJ Open Science**
- Convenor of the Collaborative Approach to Meta-Analysis and Review of Animal Data from Experimental Studies (**CAMARADES**)



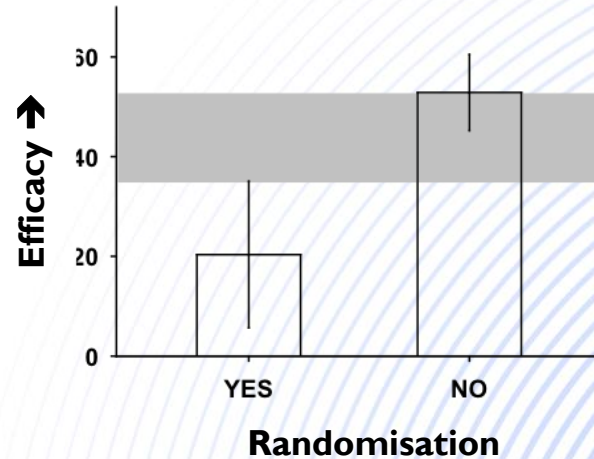
My background

- Meta-research scientist with a background in pharmacology and neuroscience
- Approach is based on systematic review & meta-analysis

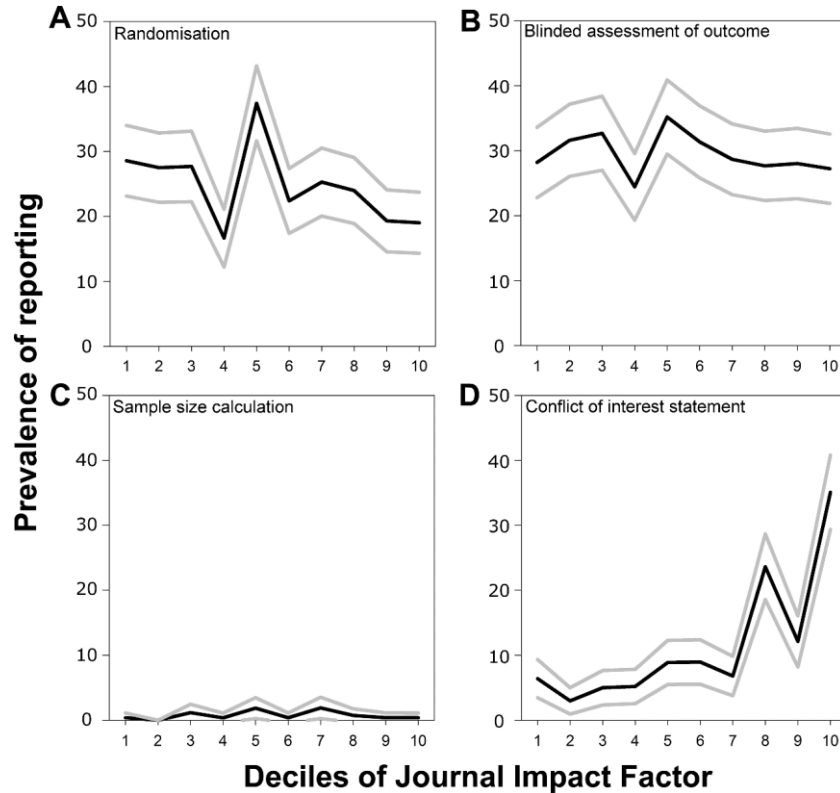


It's a problem.....

	Randomisation	Blinded Outcome Assessment
Stroke	36%	29%
MND	31%	20%
AD	15%	25%
PD	12%	15%
EAE	8%	15%
Glioma	14%	0%

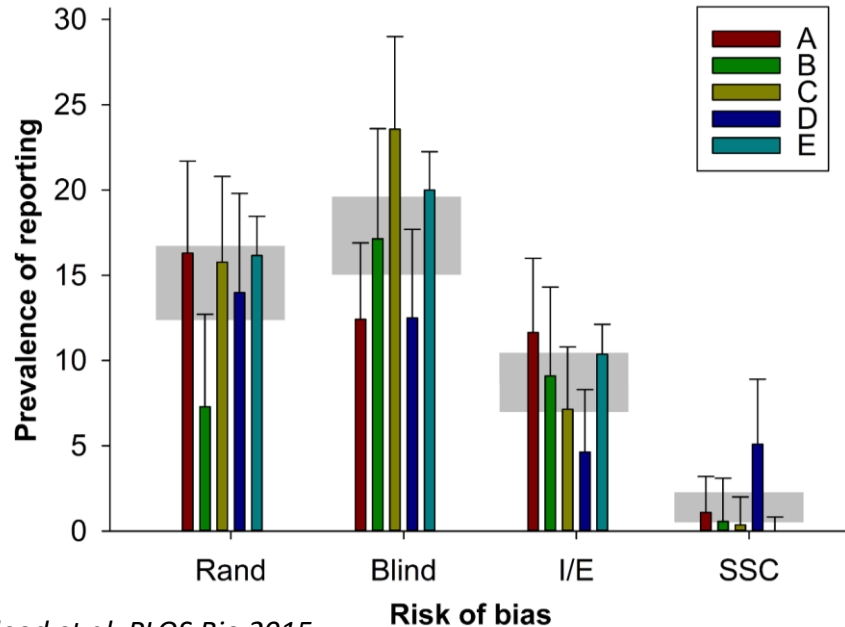


Good 'quality' journals

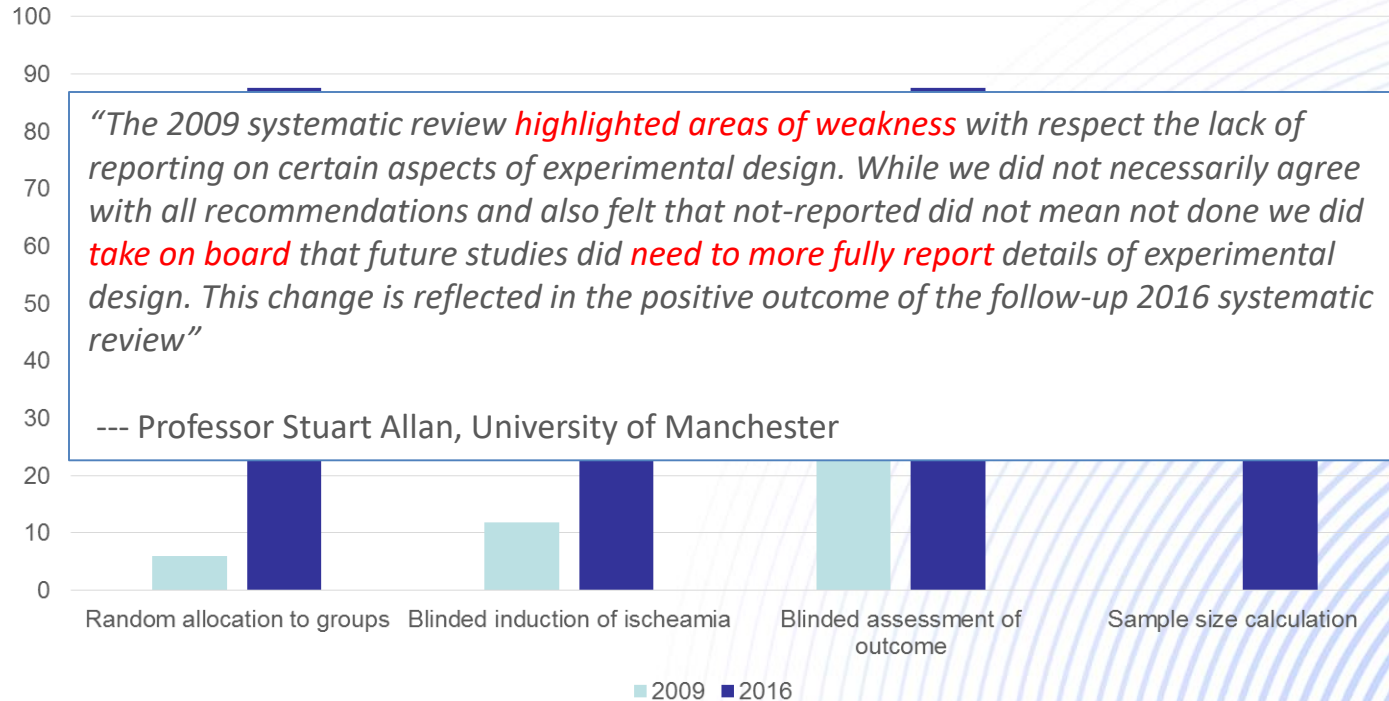


It's not just a neuroscience problem

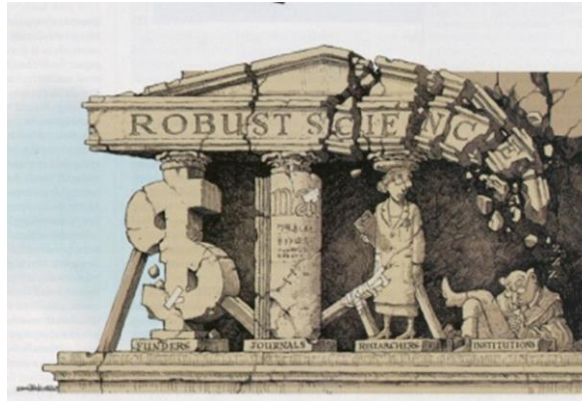
- The “best” UK institutions
- RAE – 1,173 studies



Things are improving



Conclusions



We are extending this programme of work to develop guidance to support improved reporting of *in vitro* research. These guidelines (working title, the *RIVER* guidelines - reporting *In Vitro* Experiments Responsibly) will optimise the reproducibility of *in vitro* studies and improve confidence in their validity to support wider uptake.



Reproducibility and reliability of biomedical research: improving research practice

Symposium report, October 2015



Thanks to.....



Stroke
association



Wissenschaftskolleg zu Berlin

INSTITUTE FOR ADVANCED STUDY

**NC
3R^s**

National Centre
for the Replacement
Refinement & Reduction
of Animals in Research

W

wellcome

MRC

Medical
Research
Council

ljaf

laura and john arnold foundation®