



# The Innovative Medicines Initiative: building new models of collaborative research

Angela Wittelsberger, Ph.D.

Scientific Officer

Innovative Medicines Initiative

Workshop 'Diagnostics for reducing antimicrobial resistance',  
Brussels, 19 June 2017

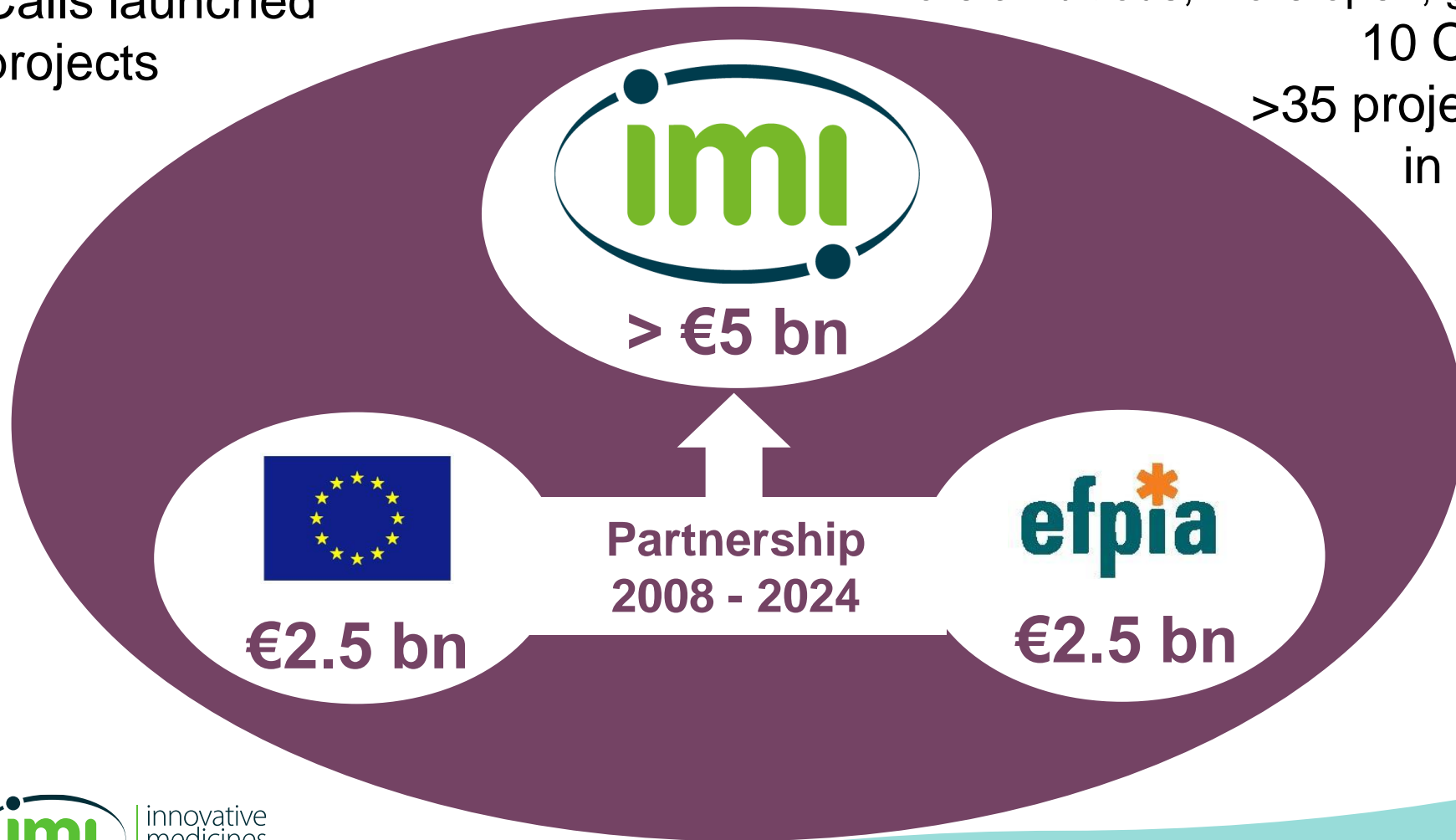
# IMI – Europe's partnership for health

## IMI: 2008-2013

Total budget: €2 bn  
11 Calls launched  
59 projects

## IMI 2: 2014-2024

Total budget: €3.3 bn  
More ambitious, more open, greater scope  
10 Calls to date  
>35 projects started/  
in preparation



# Public-private partnership: Why IMI ?

- ❖ Pooling expertise, knowledge and resources
- ❖ Developing incentives to address major unmet medical needs
- ❖ Providing a neutral trusted platform to align public and private interests
- ❖ **Facilitating a streamlined innovation process through end-to-end integration**

# IMI2 overall objectives

- **Pre-competitive research and innovation activities** of strategic importance to the EU's competitiveness and industrial leadership, or to address specific societal challenges
- **improve the current drug development process** through development of tools, standards & approaches to assess efficacy, safety & quality of health products.
- **develop diagnostic & treatment biomarkers** for diseases clearly linked to clinical relevance & approved by regulators
- **reduce time to clinical proof of concept**
- **increase success rate in clinical trials** of priority meds (WHO)
- **develop new therapies** for diseases with high unmet need, (e.g. Alzheimer's) & limited market incentives (e.g. AMR)
- **reduce failure rate of vaccine candidates**

# What does a typical IMI project look like?

Industrial partners align themselves around a real challenge for industry and agree to work together and commit resources.

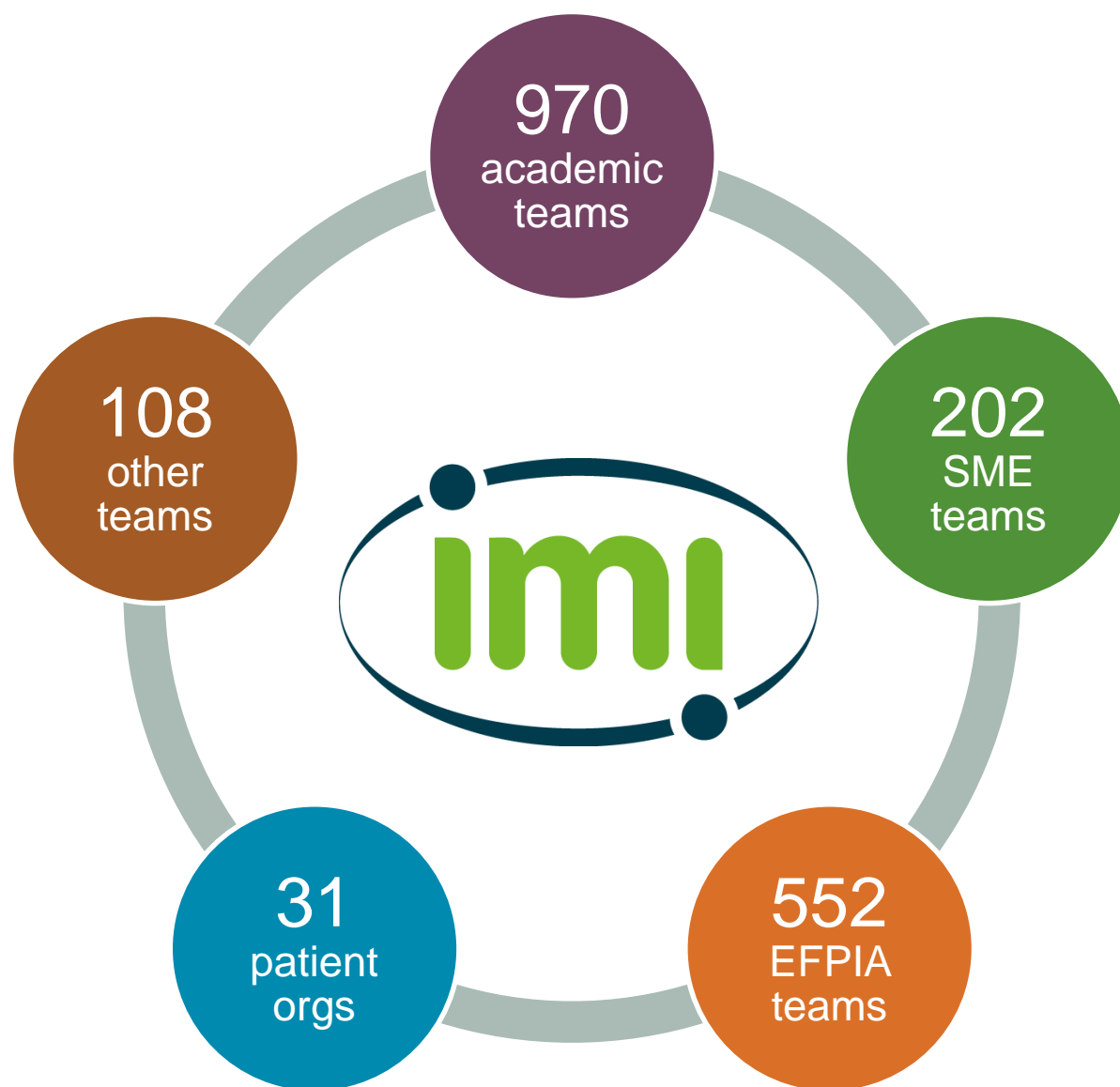
Associated Partners might join.

New ideas from public sector, universities, SMEs etc. are needed to address the challenge

Scale is a key to success and is provided through IMI funding.

Outcomes should be transformative for the industry as well as having a clear “public” value

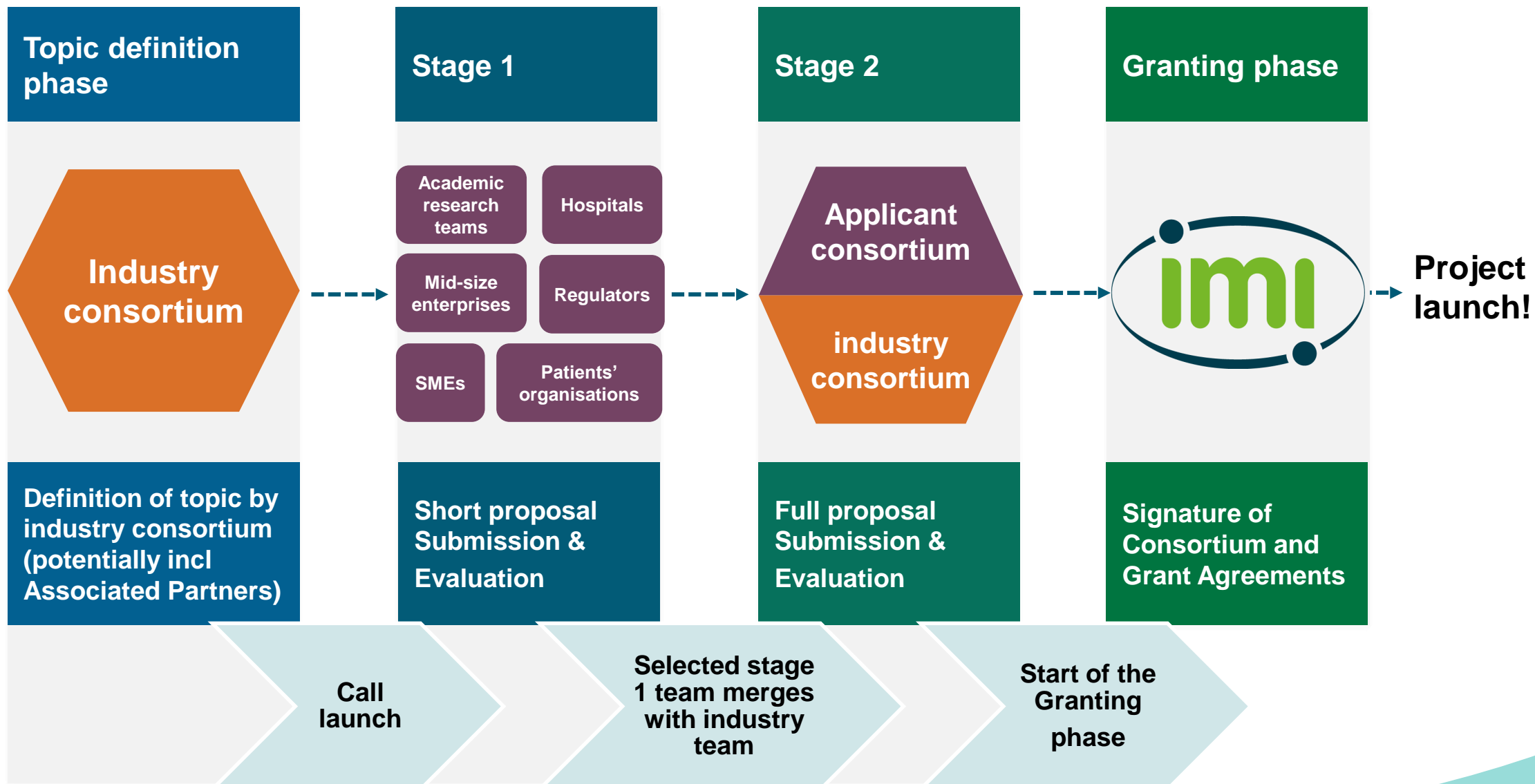
# An international, cross-sector community



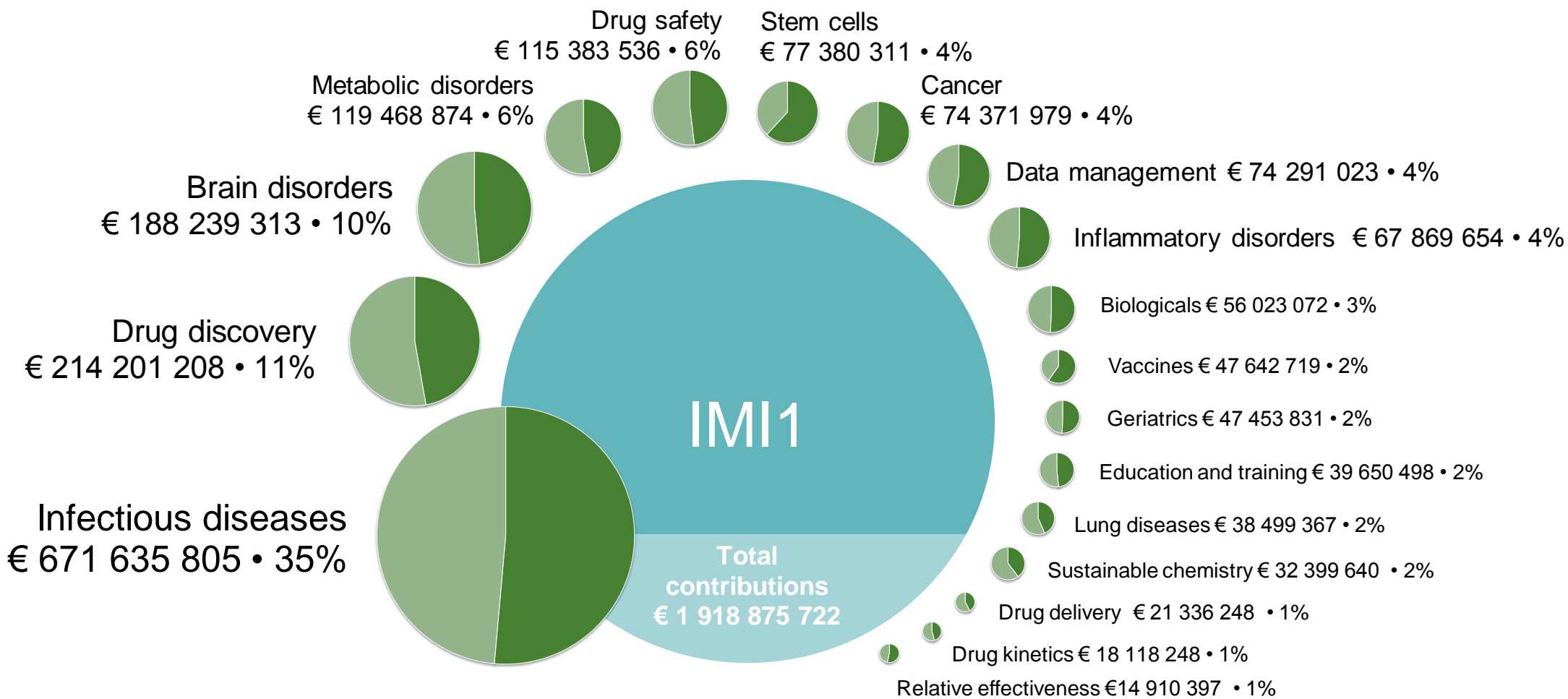
**Over 9 000 researchers** working for:

- open collaboration
- improved R&D productivity
- innovative approaches to unmet medical needs

# How does IMI work? Two stage procedure



# Distribution of funding per scientific area – IMI1



EFPIA contributions



IMI contributions



# New Drugs for Bad Bugs (ND4BB) - Facts

## 7 projects up and running

EUR 700 million, + 1 project in the pipeline

## CLIN-Net hospital network

697 hospitals – 437 cities – 39 countries in Europe

LAB-Net network: >400 laboratories

6 clinical development programmes active

Observational studies, epidemiology

Worked out **structure of 20 proteins** found in membranes of bacteria & greater understanding of efflux pumps

## ENABLE drug discovery engine

60+ hit-to-lead or lead-to-candidate programmes submitted, progression of 15+ early stage programmes, 4+ currently ongoing

**Driving discussions on new economic model of antibiotic R&D and stewardship**

# Contributors and beneficiaries receiving funding

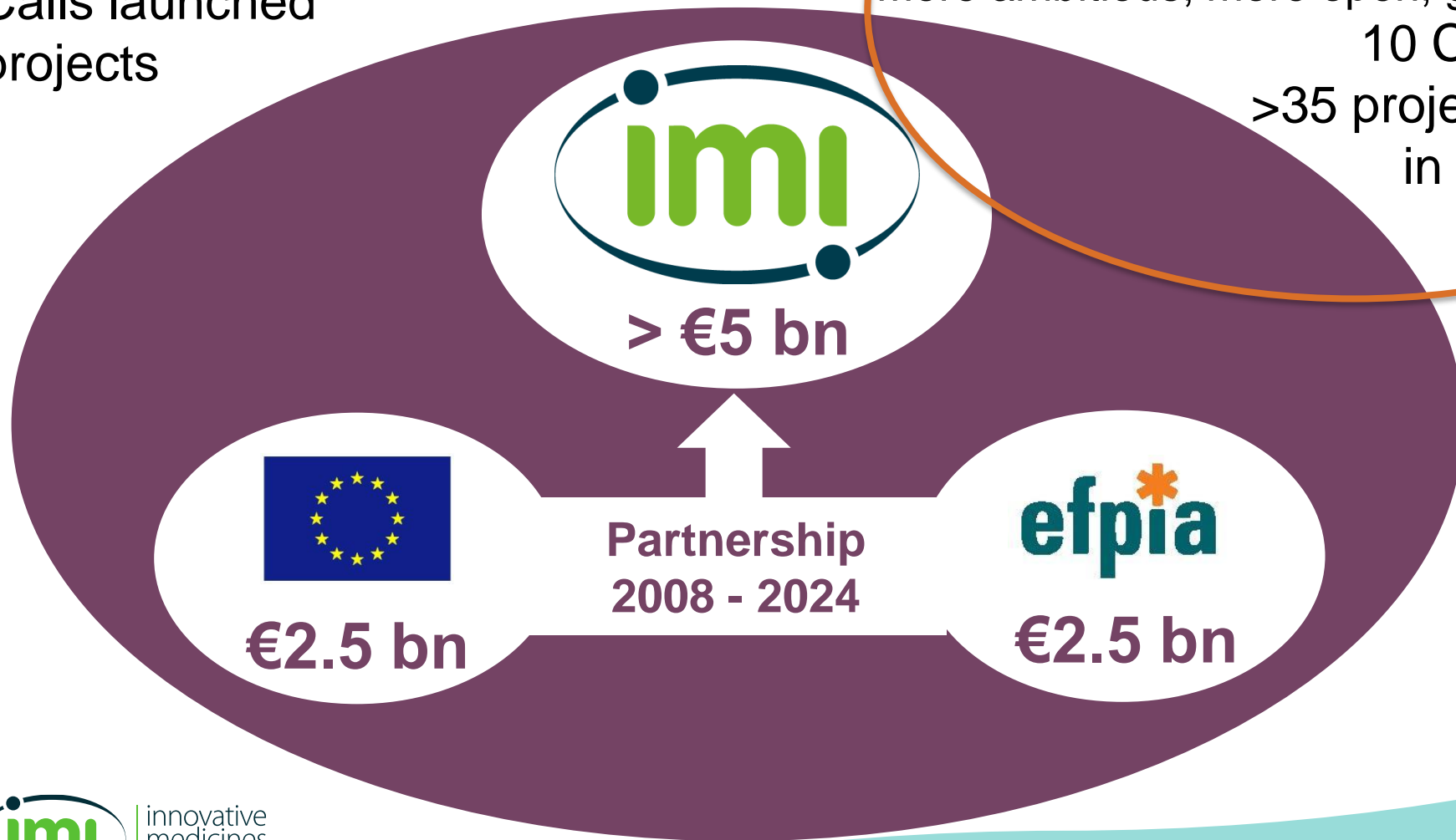
# IMI – Europe's partnership for health

## IMI: 2008-2013

Total budget: €2 bn  
11 Calls launched  
59 projects

## IMI 2: 2014-2024

Total budget: €3.3 bn  
More ambitious, more open, greater scope  
10 Calls to date  
>35 projects started/  
in preparation



# IMI 2 budget (2014 – 2024)

## EU funding goes to:

Universities

SMEs

Mid-sized companies

Patient groups

etc...



€1.638 bn



€1.425 bn

Other  
€213 m

IMI 2 total budget  
€3.276 billion

## EFPIA companies

receive no funding

contribute to projects 'in kind'

Associated Partners e.g. charities, non-EFPIA companies

# Who can become an Associated Partner ?

**Any legal entity** may apply to join IMI2 as an Associated Partner (AP) provided that they:

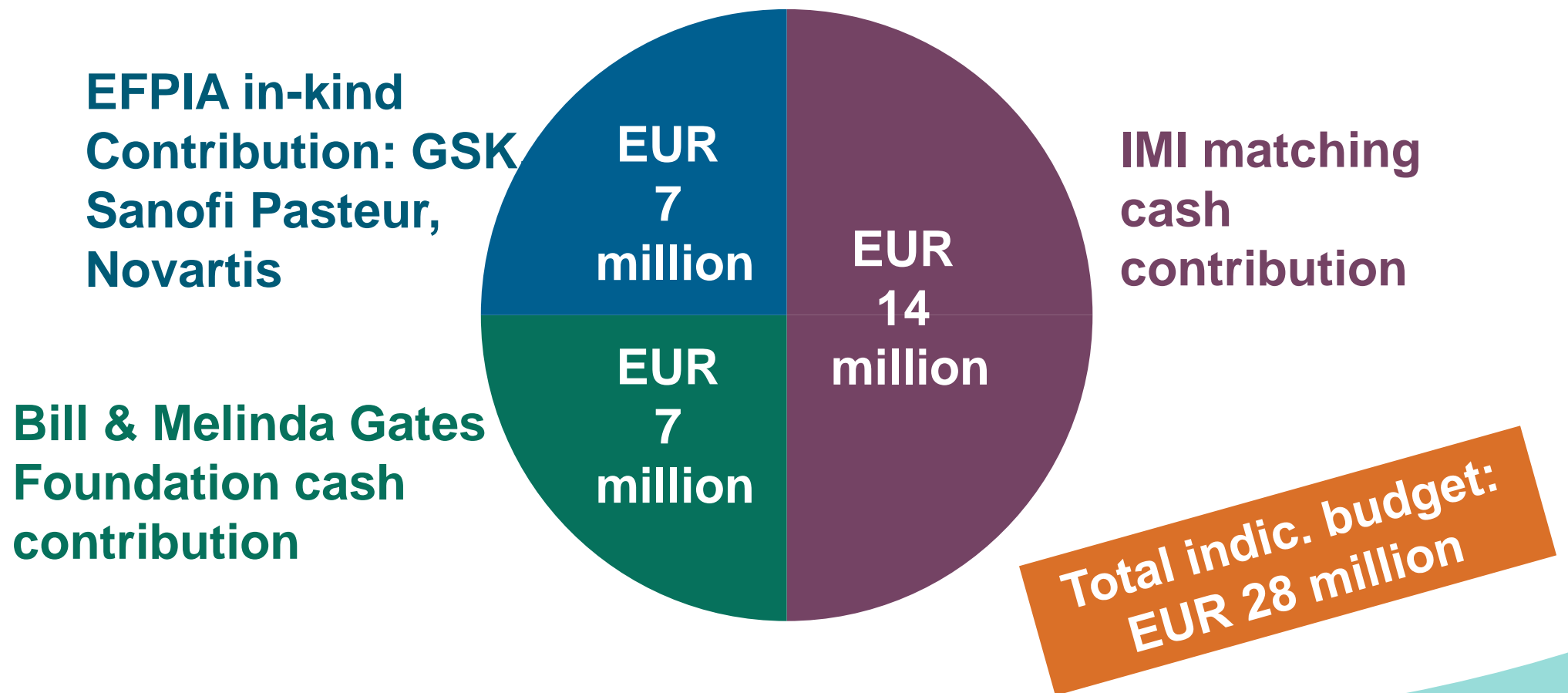
- support the objectives of IMI2 in its specific area of research
- accept the IMI2 Statutes by a letter of endorsement, detailing the scope of the association (in-kind or cash contribution, activities and duration)

Any resources they put into a project may be equally matched by IMI2 fund → leveraging resources.

Have become AP: diabetes charity JDRF, the Helmsley Charitable Trust, the Bill and Melinda Gates Foundation (BMGF), Autism Speaks, Simons Foundation Autism Research Initiative (SFARI), T1D Exchange

# Associated Partners and other industries: a new dimension of opportunities

## Example IMI2 Call 3: Pertussis vaccination research



# Attracting stakeholders

**Any legal entity  
regardless its place of establishment  
carrying out work relevant to the Call objectives  
may be part of applicant consortia**

**But... not all participating entities are eligible to  
receive funding**

# Who is eligible to receive funding?

- Academic institutions
- Small & medium-sized enterprises (SMEs)
- Mid-sized enterprises ( $\leq$  €500m)
- Non-profit organisations e.g. research organisations, patient organisations, NGOs, public bodies, intergovernmental organisations etc.

Established in:

- EU Member State
- Associated Country

***Other countries:***

***No funding unless participation deemed essential by IMI for carrying out the action***



# IMI expectations for this workshop and next steps

# This workshop – objectives

- To consult with the relevant stakeholders on a potential Call for proposals under IMI2 addressing the topic ‘Diagnostics for reducing AMR’ that would aim at establishing a framework for value-based translation of innovative diagnostics into routine use to reduce AMR.
- To better understand the challenges and hurdles faced by diagnostic innovators for translation of early-stage products into validation, and value demonstration in primary and clinical healthcare practice.
- To obtain a better understanding of what evidence is needed from regulators, health technology assessment bodies and payers for implementation and adoption by healthcare systems.

# Next steps

Willingness by a group of diagnostics companies and The Wellcome Trust to develop an IMI call topic

- Challenges to be addressed
- Scope for collaboration
- Scope for public-private partnership
- First draft of activities to be addressed by potential IMI project



Explore involvement of other 'contributors'

- Other private companies contributing 'in-kind'
- Associated Partners

Consultation workshop

- Input from stakeholders (needs of SME's, ideas from academia, input from regulators, HTA, etc)
- Finalise scope and objectives

IMI Call topic text

- Write the call text
- Finalise budget & scope



**THANK YOU**