



European Medical Information Framework

Bart Vannieuwenhuyse

Roundtable European Parliament
8 November 2016



Project objective --

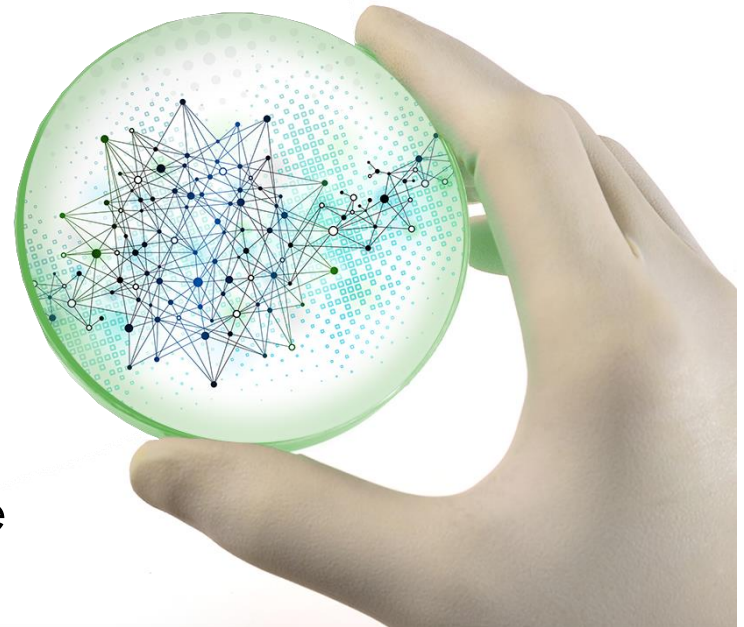


EMIF creates a network that supports a flow from:

Data Discovery

↳ Data Assessment

↳ Data Reuse



EMIF project overview



ACADEMIC PARTNERS



- ❖ 57 partners from 14 European countries
- ❖ €56 million worth of resources
- ❖ Three projects in one
- ❖ Five year project (2013 – 2017)

SME PARTNERS



EFPIA PARTNERS



PATIENT ORGANISATION



EMIF-Metabolic

Identify predictors of metabolic complications in obesity

EMIF-AD

Identify predictors of Alzheimer's Disease (AD) in the pre-clinical and prodromal phase

EMIF-Plattform

Develop a framework for evaluating, enhancing and providing access to human health data across Europe, support EMIF-Metabolic and EMIF-AD (the specific topics below) as well as support research using human health data in general

Data available through consortium



- Large variety in “types” of data



Primary care data sets



Hospital data



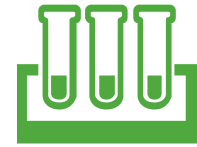
Administrative data



Regional record-linkage systems



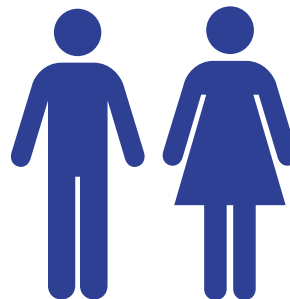
Registries and cohorts (broad and disease specific)



Biobanks

- Data is available from more than 40 million subjects from seven EU countries, including

25,000
subjects in
AD cohorts



more than
94,000
subjects in
metabolic cohorts

Catalogue – AD cohorts



EMIF Catalogue - Google Chrome
<https://emif-catalogue.eu/c/adcohort>

EMIF CATALOGUE / EMIF AD

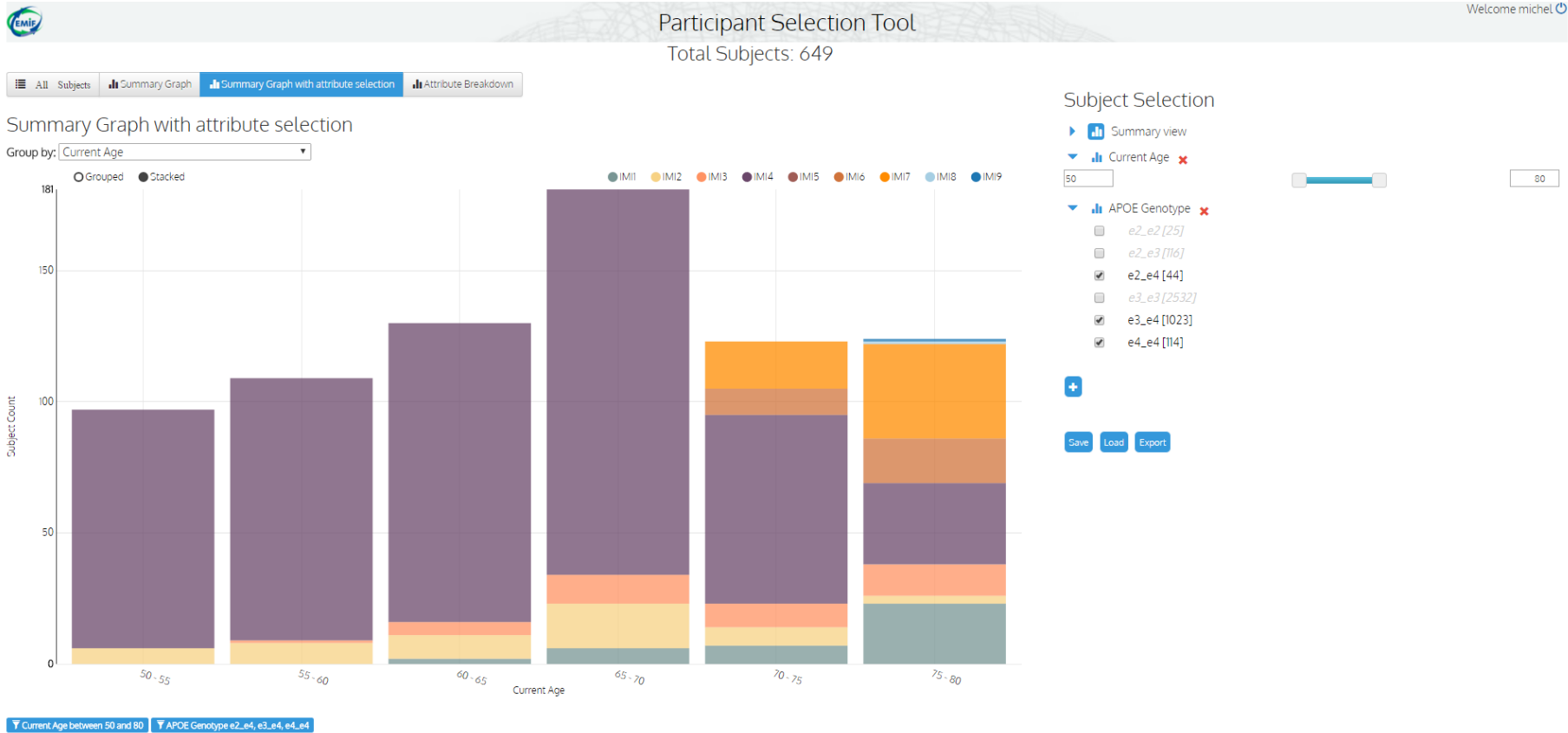
Free text search EMIF AD

EMIF AD / All

Compare Print
 Selected databases: 0

Acronym	Name	Institution name	Location	S...	P...	Last update	Select
Filter	Filter	Filter	Filter	Filter	Filter	Filter	?
AddNeuroMed	AddNeuroMed, Innovative Medicines for Europe (Innomed)	Institute of Psychiatry, King's College London	City of London, Greater London, England, United Kingdom			2016-04-04	<input type="checkbox"/>
ADGEN	Kuopio-ADGEN	University of Eastern Finland	Kuopio, Kuopio, Pohjois-Savo, Finland			2015-11-06	<input type="checkbox"/>
ADNI-1	Alzheimer's Disease Neuroimaging Initiative	University of California	San Francisco County, California, United States			2015-11-06	<input type="checkbox"/>
ADNI 2	Alzheimer's Disease Neuroimaging Initiative	University of California	San Francisco County, California, United States			2015-11-06	<input type="checkbox"/>
ADNI-GO	Alzheimer's Disease Neuroimaging Initiative	University of California	San Diego County, California, United States			2015-11-05	<input type="checkbox"/>

Participant selection tool

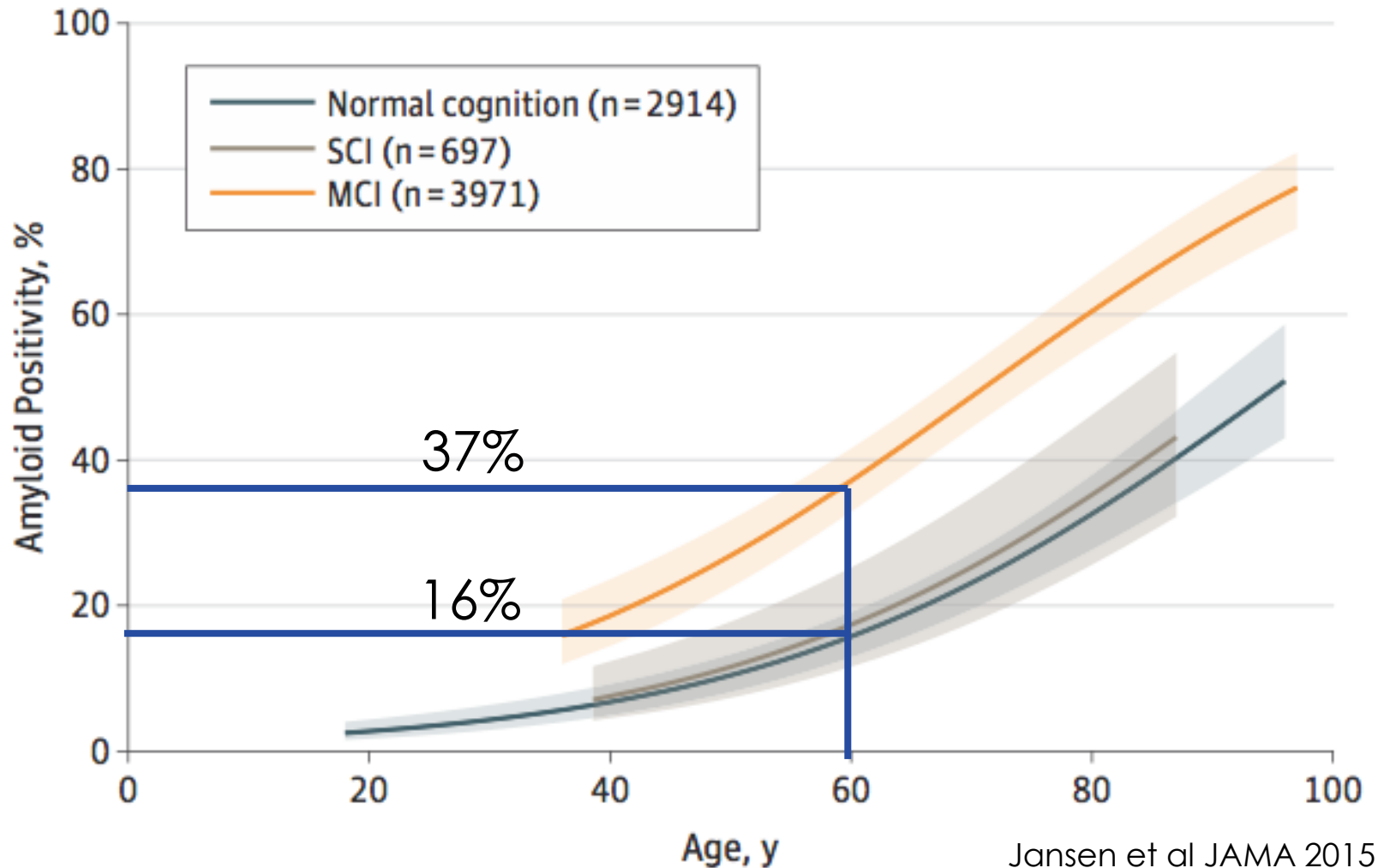


'Impossible' sample collections realised



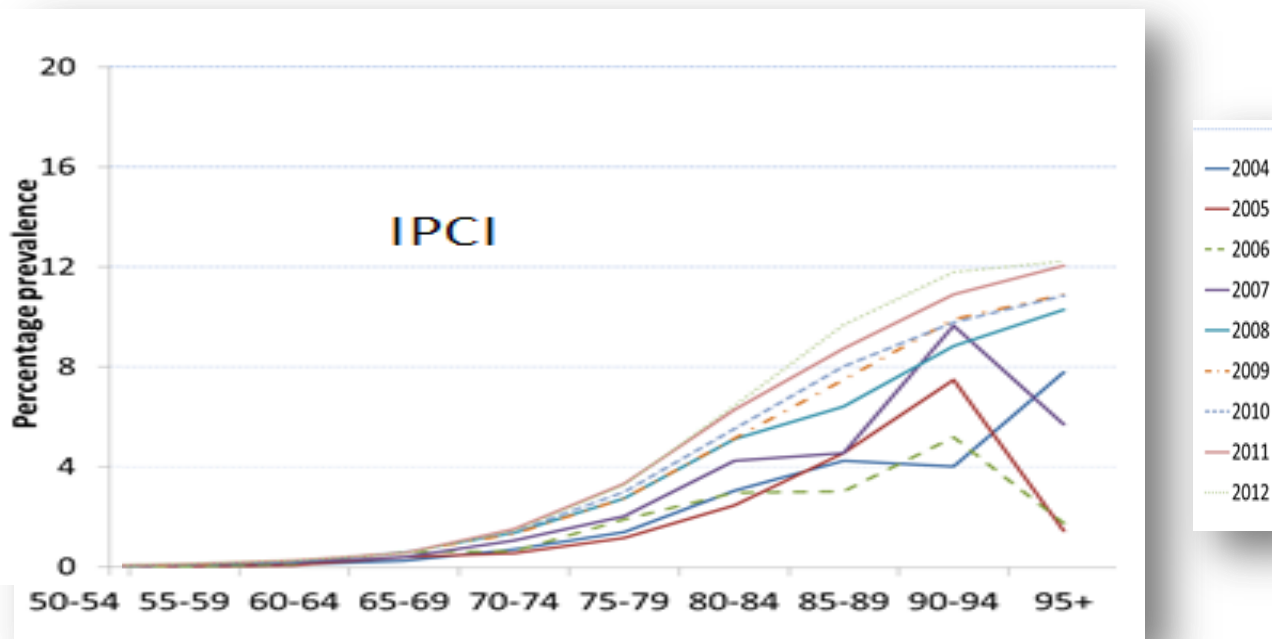
- ❖ EMIF 500 samples
 - Focus on CSF biomarkers
- ❖ EMIF 1000 samples
 - Focus on amyloid load
- ❖ Sample and data access facilitated through data catalogue
- ❖ Identification and collection of samples and relevant clinical data in matter of weeks rather than months --

Prevalence amyloid positivity



Jansen et al JAMA 2015

Data from electronic health records



6 Electronic health records from 5 countries

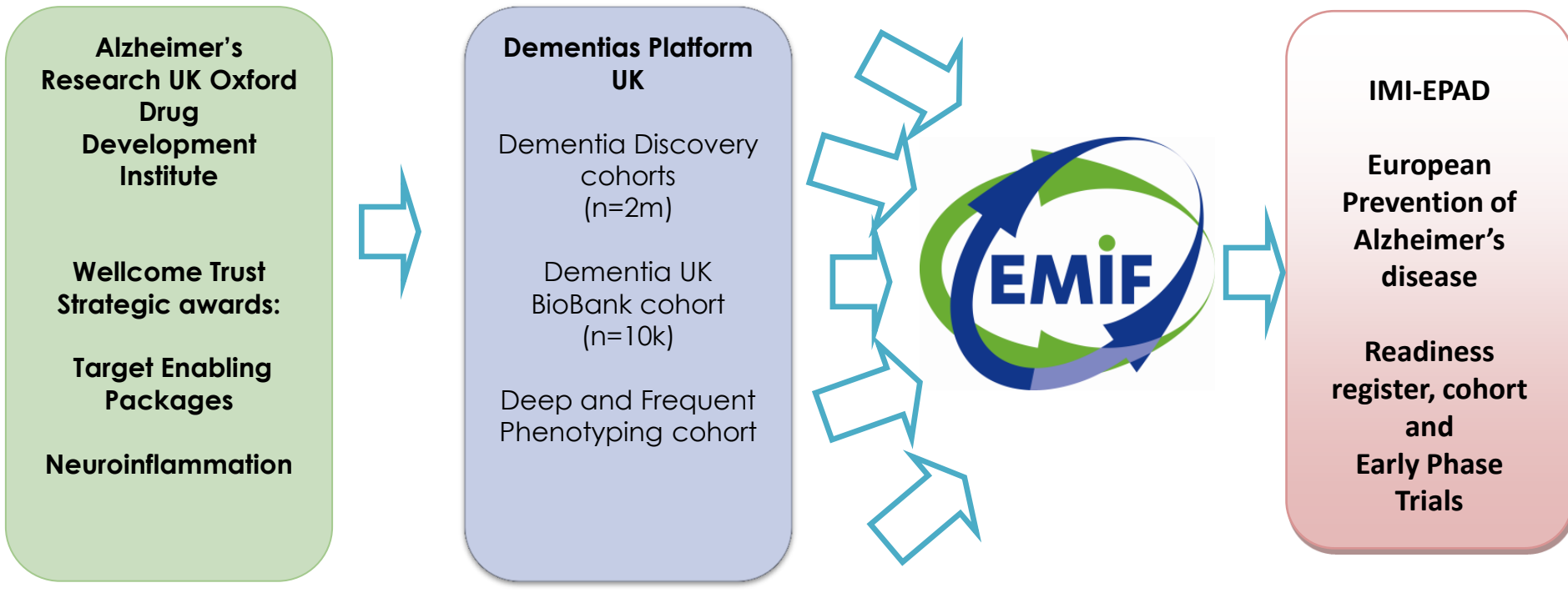
183,428 cases of dementia from 2004-12

Person-years coverage prior to dementia diagnosis – 1,049,947

Person-years after dementia diagnosis – 401,823

IPCI = Integrated Primary Care Information database with around 3MM subjects from the Netherlands

Research collaborations in dementia



Conclusion



- ❖ Large scale project with multiple stakeholders and data providers. This would be very hard for one pharma company to set up
- ❖ Reuse of existing data is cost (and time) efficient
- ❖ Valuable results in AD as a result of collaborations (international and cross-sector)
- ❖ EMIF provides a foundation for other projects to build on (e.g. EPAD, DP-UK)

Further Information



❖ EMIF general

- Bart Vannieuwenhuysse (bvannieu@its.inj.com)
- Simon Lovestone (simon.lovestone@kcl.ac.uk)
- Johan van der Lei (j.vanderlei@erasmusmc.nl)

❖ EMIF-Platform

- Johan van der Lei (j.vanderlei@erasmusmc.nl)
- Nigel Hughes (nhuges@its.inj.com)

❖ EMIF-Metabolic

- Ulf Smith (ulf.smith@medic.gu.se)
- Dawn Waterworth (Dawn.M.Waterworth@gsk.com)

❖ EMIF-AD

- Pieter Jelle Visser (pj.visser@maastrichtuniversity.nl)
- Johannes Streffer (jstreffe@its.inj.com)



www.emif.eu

Register for our newsletter!

EMIF is operating under IMI Grant Agreement n°115372