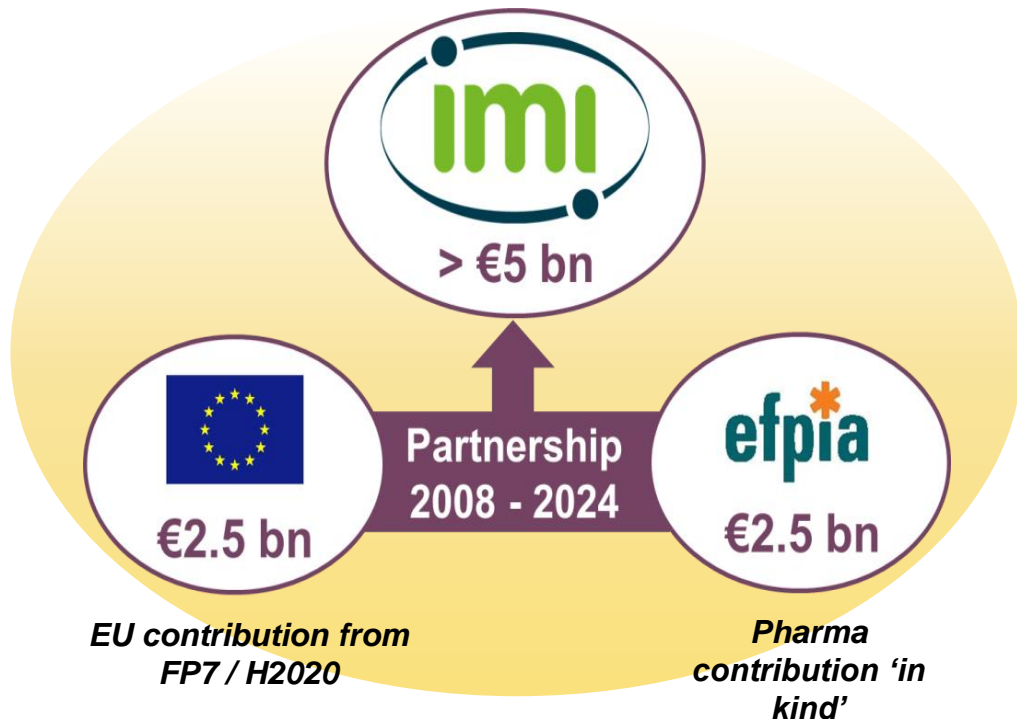




The Innovative Medicines Initiative – Promoting Collaboration for Alzheimer’s Disease Research

Elisabetta Vaudano, IMI Principal Scientific Manager
EP Alzheimer's Collaboration Roundtable, 8 November 2016

Innovative Medicines Initiative: Europe's partnership for health



A partnership between EU
Commission and the European
Federation of Pharmaceutical
Industries and Association
(EFPIA)



Focus on unmet needs

Non-competitive collaborative research

Competitive Calls for proposals

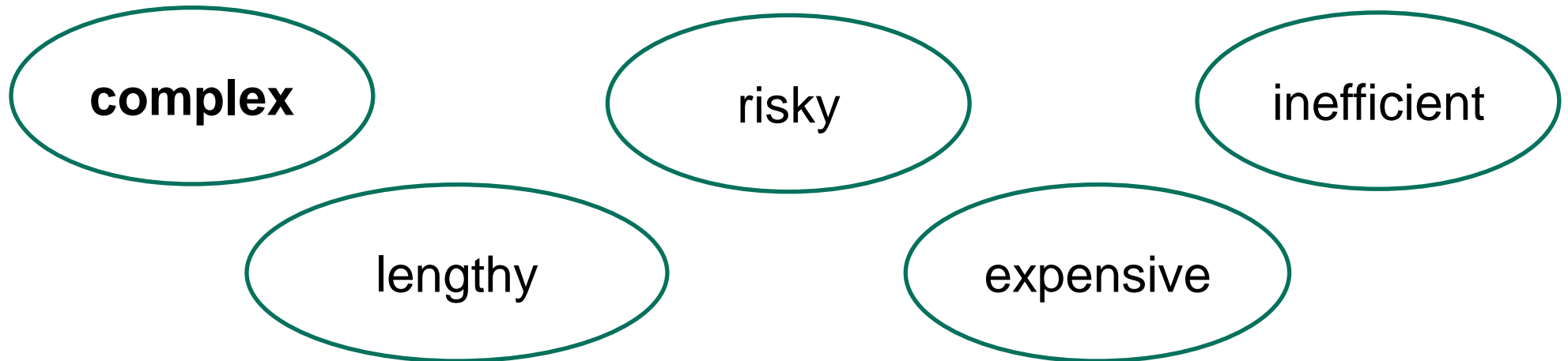
Open collaboration in public-private
consortia

Data sharing, dissemination
of results...

Industry contribution is in kind

Why do we need IMI?

Because drug development is very...



Because...

- Biological mechanisms underlying disease are complex
- Clinical trial designs need to be adapted to scientific knowledge
- Regulatory pathways should be adapted due to scientific drivers

Why do we need IMI?

Because despite excellent research we still don't have...

enough
antibiotics in
development

a cure for
diabetes

an Ebola
vaccine

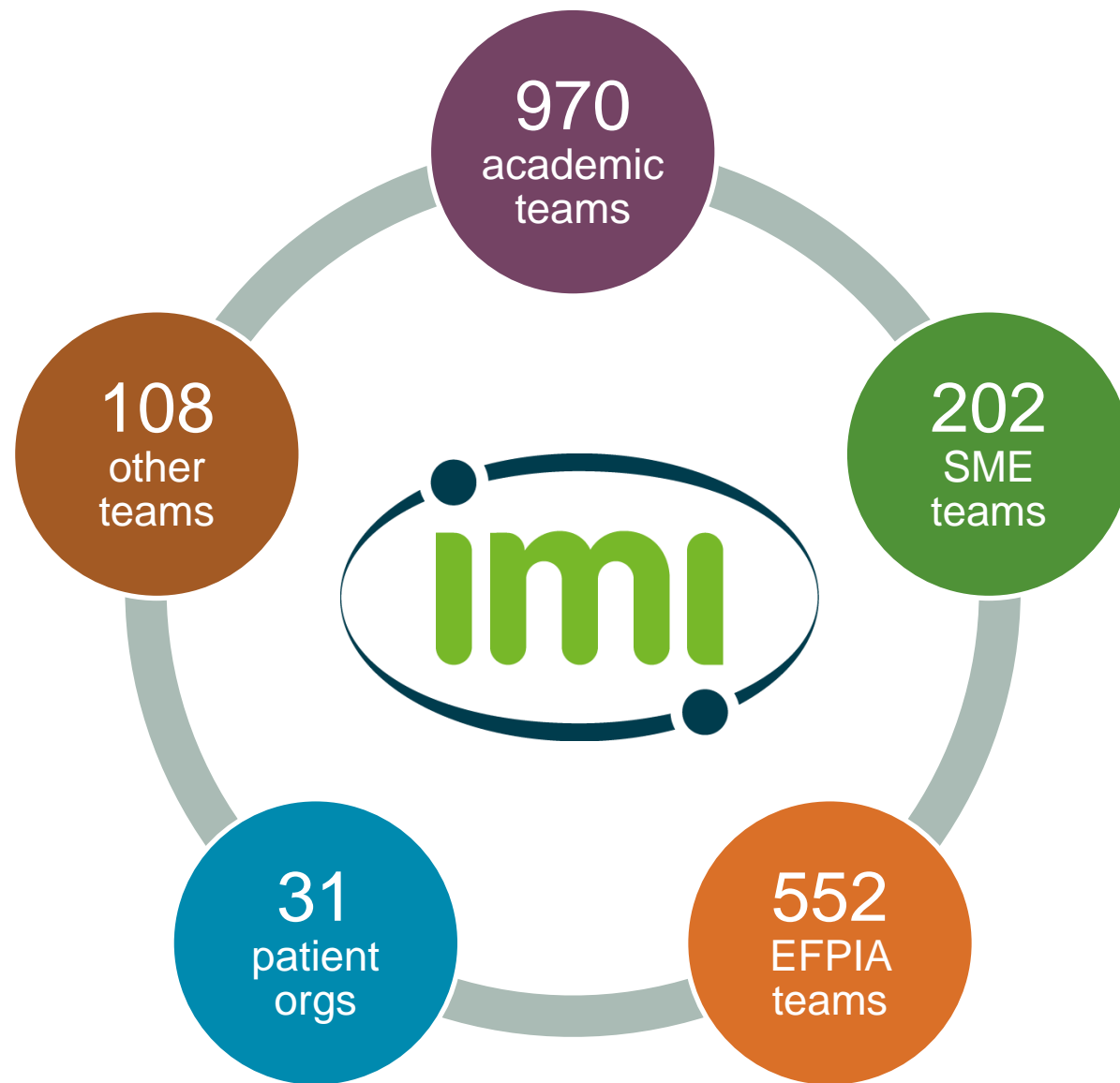
a cure for
schizophrenia

a cure for
dementia

So IMI is...

- supporting projects across the whole spectrum of medical research, development & innovation, including drug development based on understanding the underlying mechanisms of disease
- identifying & developing potential diagnostics and drugs
- testing safety / efficacy
- adapting clinical trial design based on current scientific knowledge

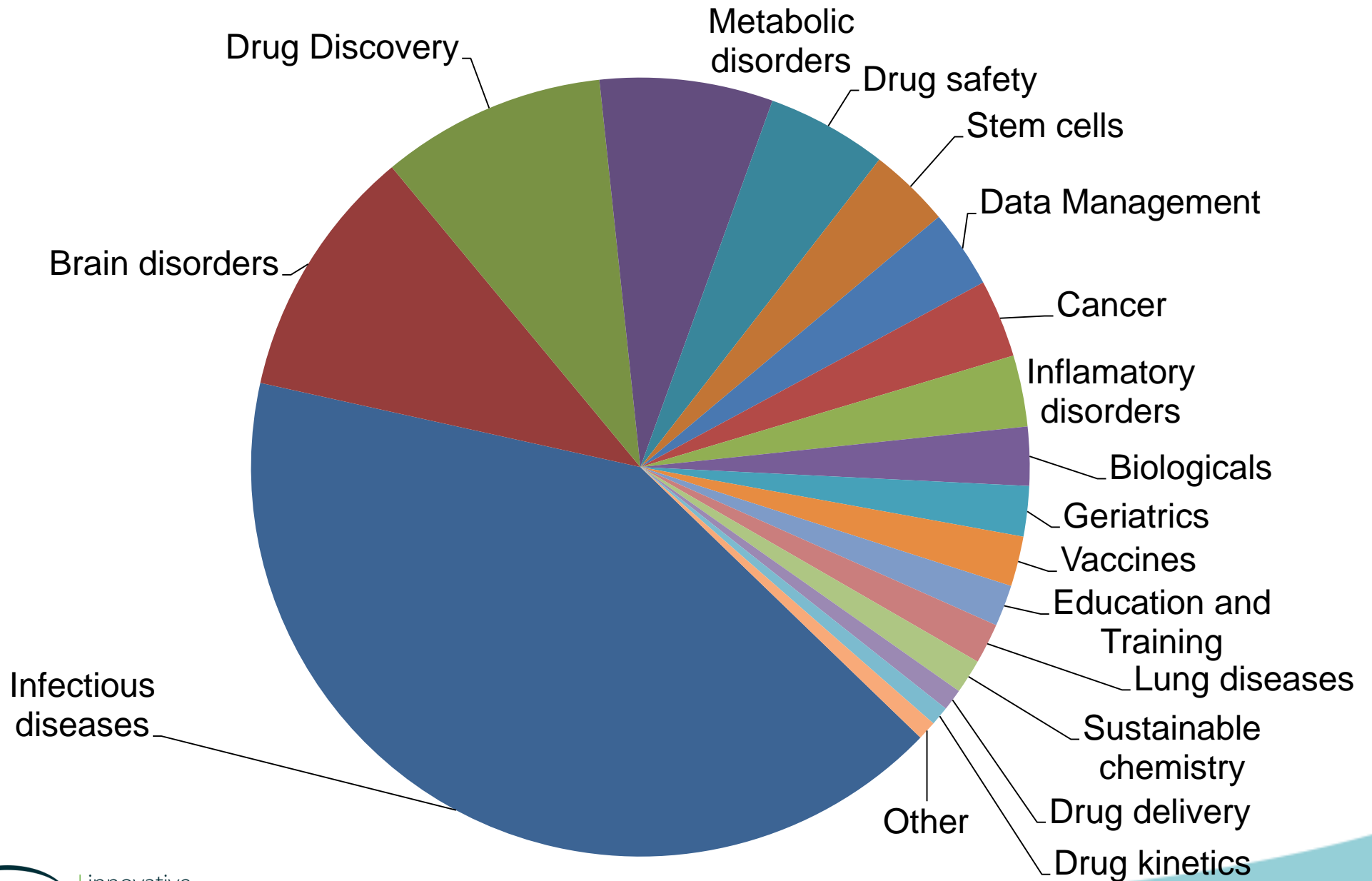
An international, cross-sector community



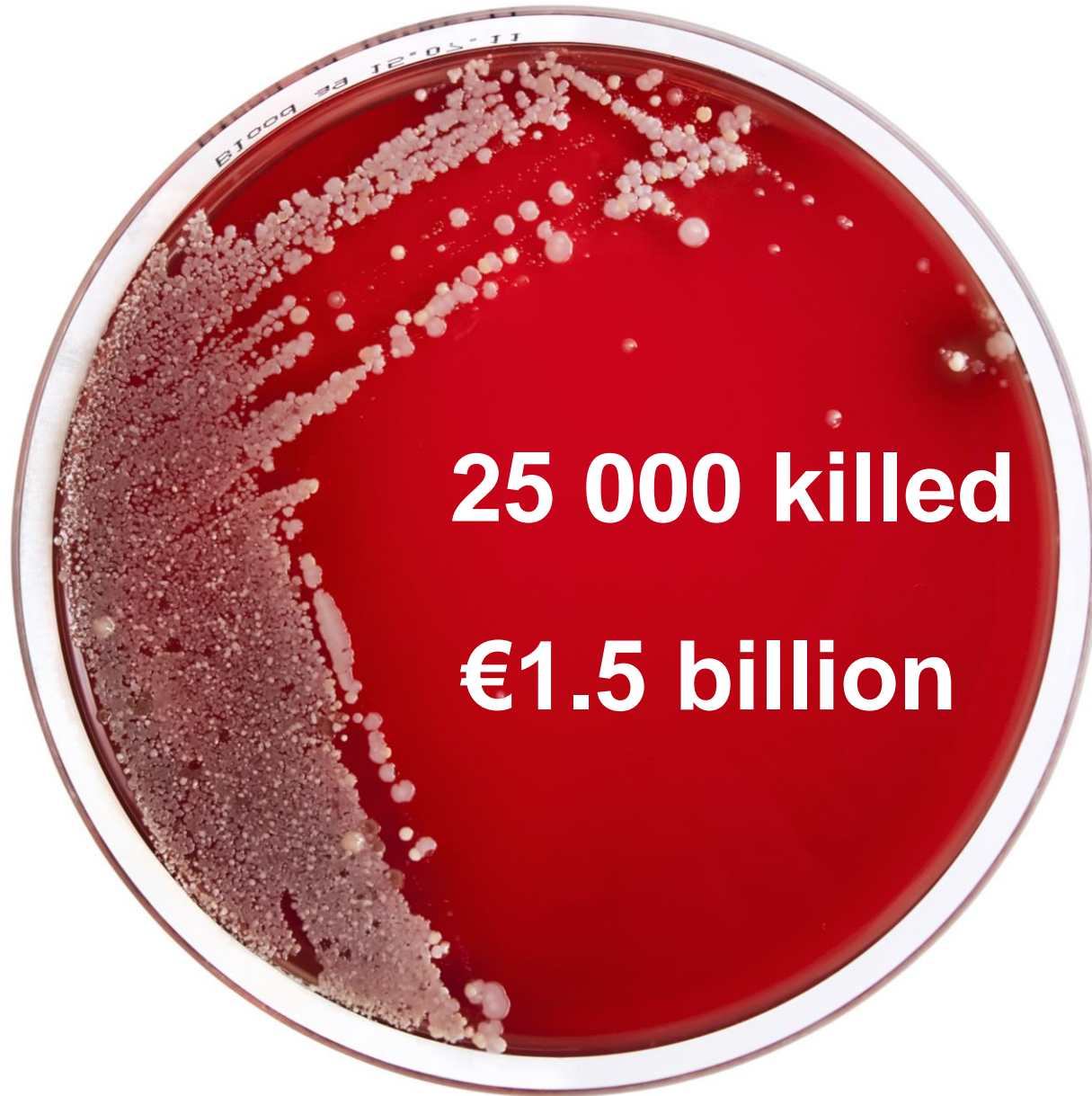
Over 9 000 researchers working for:

- open collaboration
- improved R&D productivity
- innovative approaches to unmet medical needs

IMI budget breakdown



Antimicrobial resistance – a growing threat



IMI New Drugs for Bad Bugs programme

Challenge 1: Getting the drug into the bug

TRANSLOCATION: Addressing scientific challenge of penetration barriers & efflux in & from the pathogen

Challenge 2: Translation from early discovery to clinic

ENABLE: Combine academia / industry expertise to work on early-stage novel molecules



Challenge 3: Clinical dvpt long, costly & often inefficient

COMBACTE family, iABC: Sustainable clinical investigator / laboratory / epidemiology networks; clinical studies incl. in eastern & southern Europe

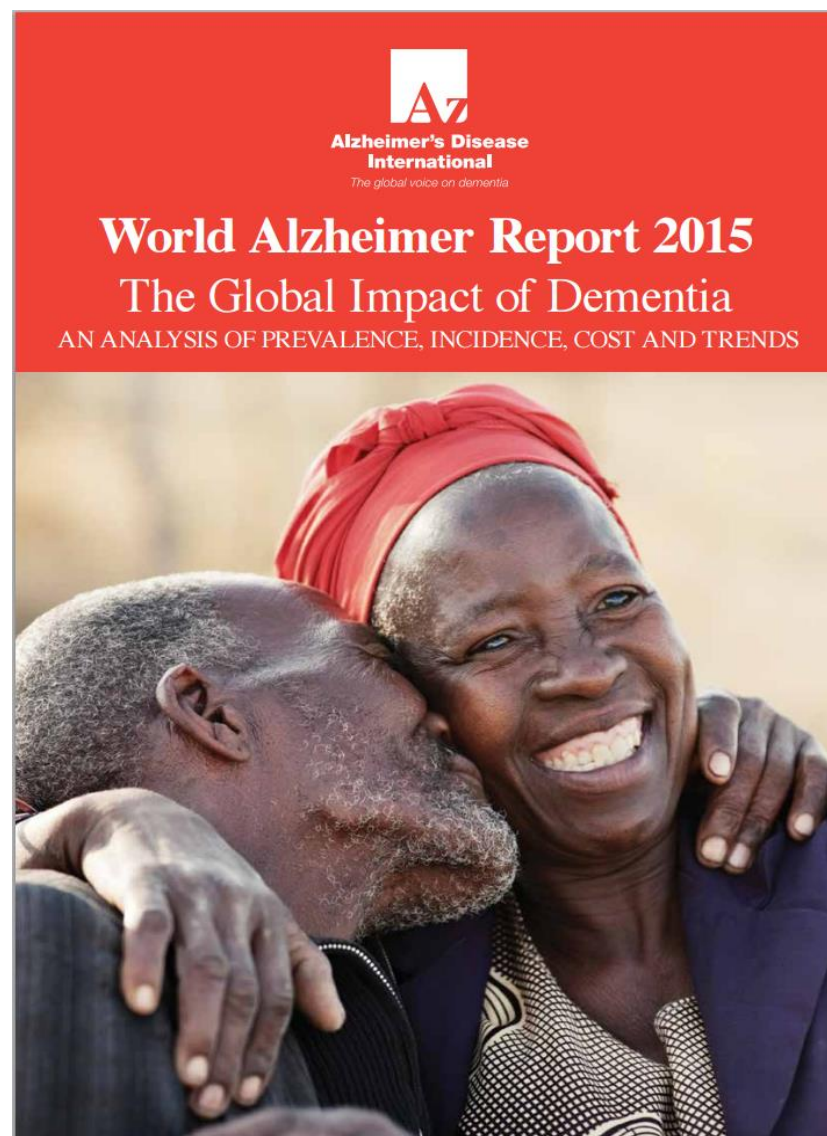
Challenge 4: Low return on investment

DRIVE-AB: Options for a new economic model of antibiotic development & stewardship. Buy in from stakeholders

Alzheimer's disease – a major unmet need

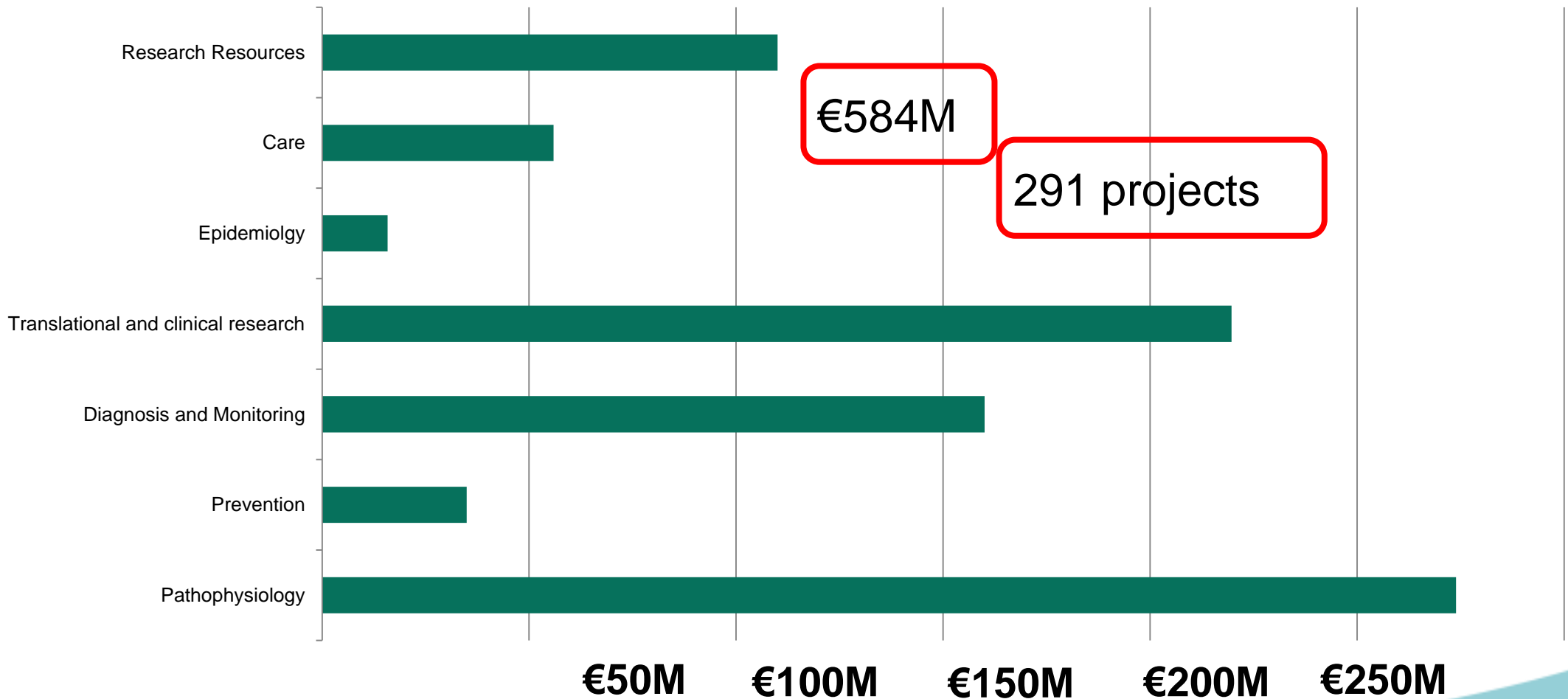
Alzheimer's disease in numbers...

- **46.8 million** affected globally
- **10.5 million** in Europe
- **Global cost** EUR 732 billion

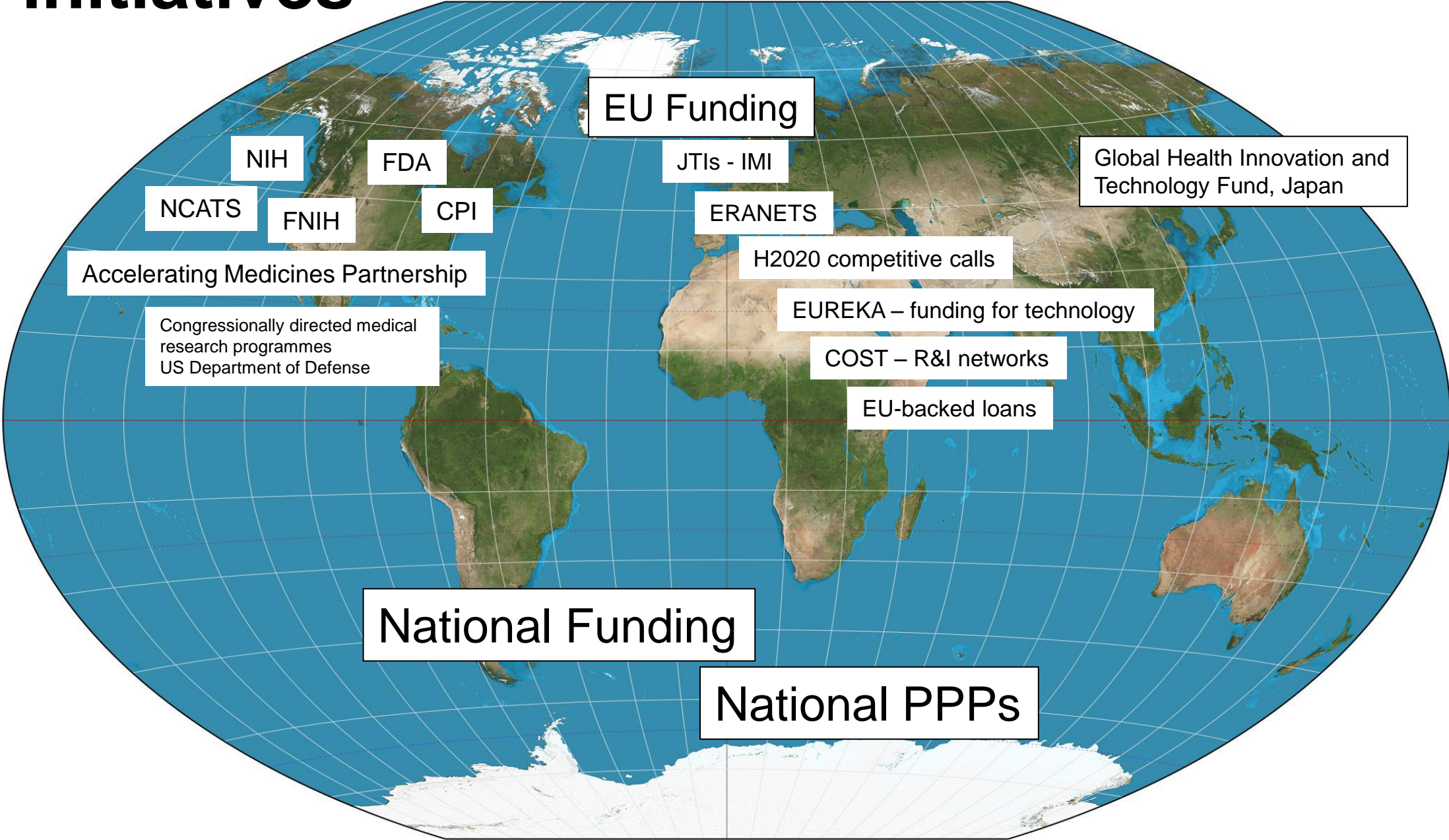


Dementia research FP7 (2007-2013)

Collaborative research / Frontier research / Training and mobility



Large number of competitive initiatives



IMI Alzheimer's Disease Platform

H2020: SOCIETAL CHALLENGES: HEALTH



© Gerd Altmann

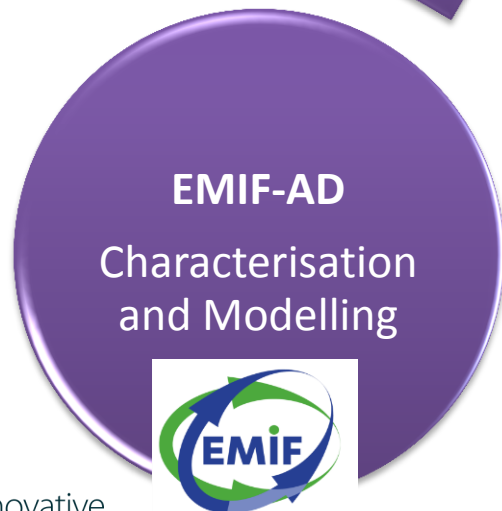
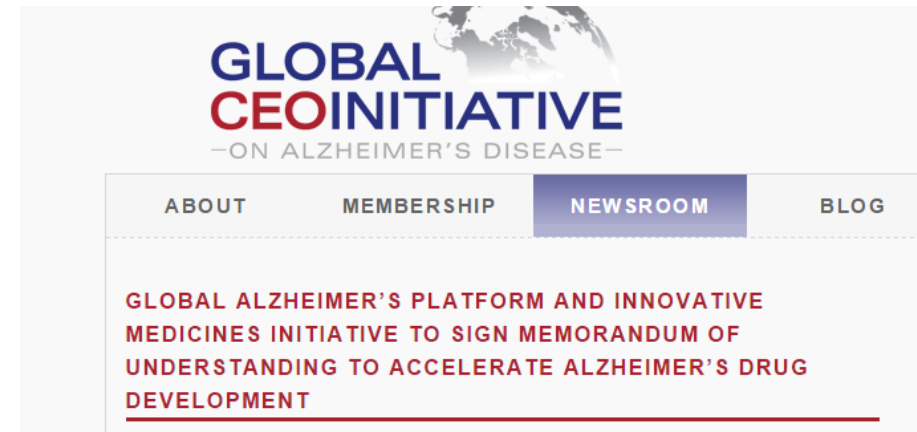
19 March 2015

IMI Alzheimer's projects launch joint platform

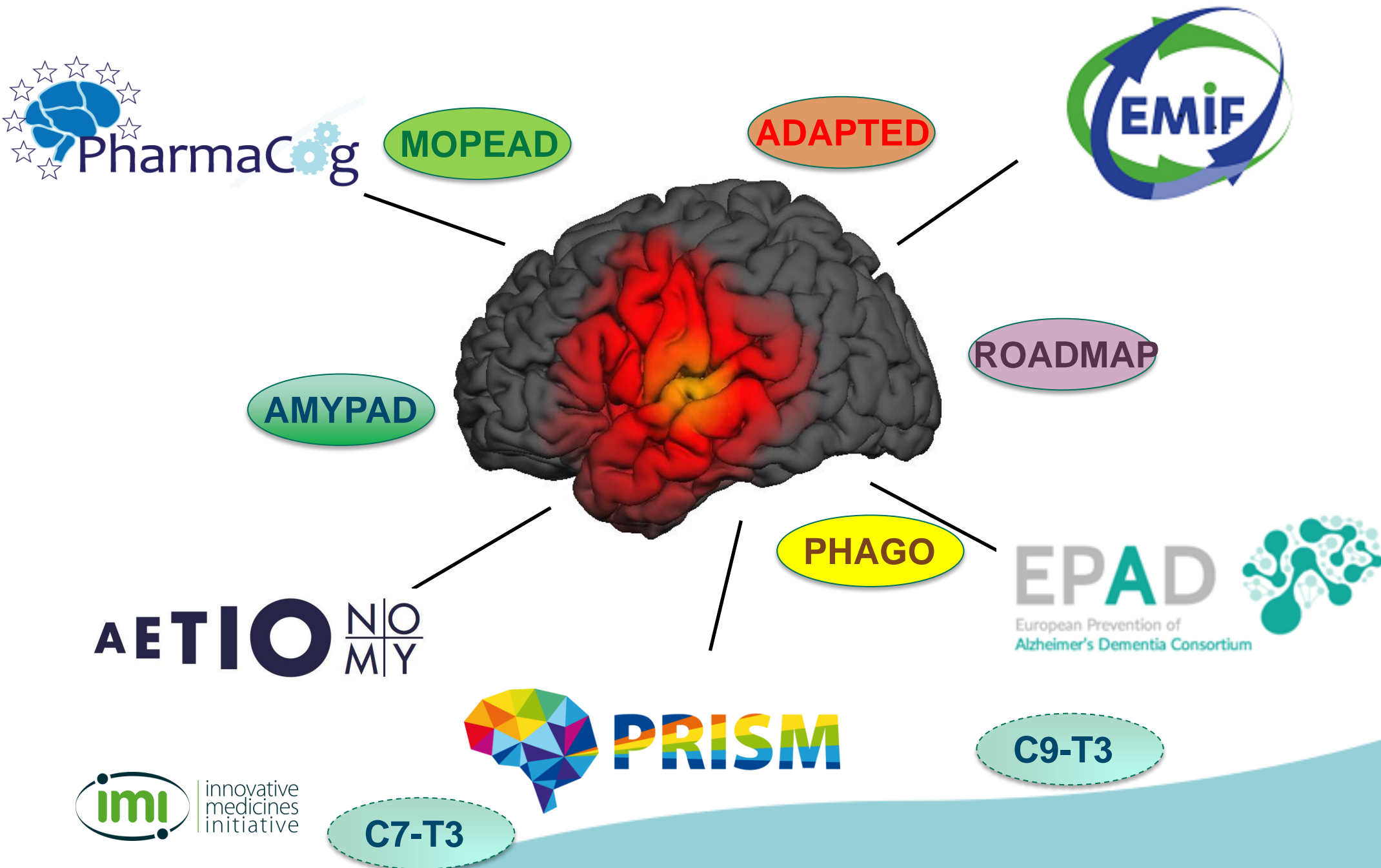


Facilitate collaboration to help deliver results faster, create efficiencies and create value

IMI Alzheimer's Research Platform and beyond



IMI action on Alzheimer's disease



The scope of this Roundtable

The world is currently staring at a rapidly advancing future that features 135 million-plus people living with AD or other dementias, costing trillions to care for and treat with no solution in sight.

To significantly advance progress in this area it is necessary to leverage resources and learnings by collaboration and data sharing.

- We will present some examples of how this can be achieved from the IMI projects EMIF, EPAD and AETIONOMY and from the HBP and Dementia Platform UK.
- We will gather the views of different stakeholders on why collaboration is needed, where is the impact and what are the obstacles
- We will propose some suggestions to facilitate collaborative research in Alzheimer's disease and other dementias.

Stay in touch

- Visit our website
www.imi.europa.eu
- Sign up to our newsletter
bit.ly/IMInewsletter
- Follow us on Twitter
[@IMI_JU](https://twitter.com/IMI_JU)
- Join our LinkedIn group
bit.ly/LinkedInIMI
- E-mail us
infodesk@imi.europa.eu



The screenshot shows the IMI website homepage. At the top left is the IMI logo and the text 'innovative medicines initiative'. Below this is a navigation menu with links for Home, About IMI, Get involved, Projects, Calls for proposals, News, Events & Media, and Reference documents. There are also buttons for 'PARTNER SEARCH', 'EDUCATION & TRAINING', 'SMALL & MEDIUM', and 'INTELLECTUAL'. The main content area features a search bar, a section titled 'THE INNOVATIVE MEDICINES INITIATIVE' with a description of the initiative, and a 'NEWSFLASH' section with three recent updates. A 'Follow us on Twitter' button is also present.



The screenshot shows the IMI Twitter profile page. At the top is the IMI logo and the text 'innovative medicines initiative'. Below this is a header with statistics: TWEETS 3,401, FOLLOWING 1,879, FOLLOWERS 4,252, LIKES 60, and LISTS 3. The profile bio states: 'The Innovative Medicines Initiative (IMI) is a public-private partnership aiming to speed up the development of better and safer medicines for patients.' The location is Brussels, the website is imi.europa.eu, and it was joined in June 2010. There are 193 photos and videos. The main content area shows three tweets from IMI @IMI_JU. The first tweet is from 2h ago: 'We had a busy first day at #BIO2016! Catch up on our sessions on #AntimicrobialResistance & #Alzheimer at bit.ly/IMlatBIO'. The second tweet is from 6h ago: 'Talk now turning to role of microbiome & links between #Alzheimers & #diabetes #BIO2016'. The third tweet is from 6h ago: 'Interesting discussion on animal models for #Alzheimer, or the lack thereof. Lots of interesting questions and thoughts! #BIO2016'.