

The challenge, the vision and the value



Luc Truyen

Global Head- Development and
External Affairs-Neuroscience

Janssen Pharmaceutical

Companies of Johnson & Johnson

WHY ?

WHAT ?

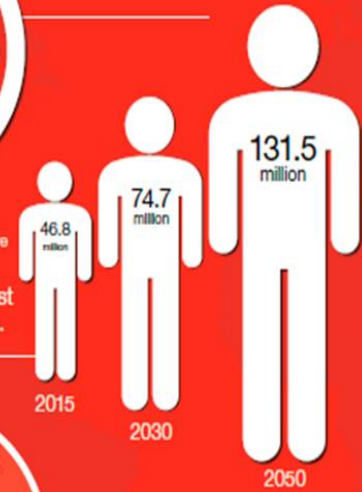


INFOGRAPHIC

The global impact of dementia



46.8 million people worldwide are living with dementia in 2015.
This number will almost double every 20 years.



Much of the increase will take place in low and middle income countries (LMICs): in 2015, 58% of all people with dementia live in LMICs, rising to 63% in 2030 and 68% in 2050.

HOW?

WHEN ?

Disclaimer

- The opinions expressed in this presentation are those of the presenter only and do not necessarily reflect the positions or opinions of Janssen Research and Development, L.L.C. or any other individual or affiliate of Johnson & Johnson. The presenter makes no warranties with respect to the accuracy of the data or materials presented herein. All information is provided for informational purposes only and does not constitute advice regarding clinical research-related activities.

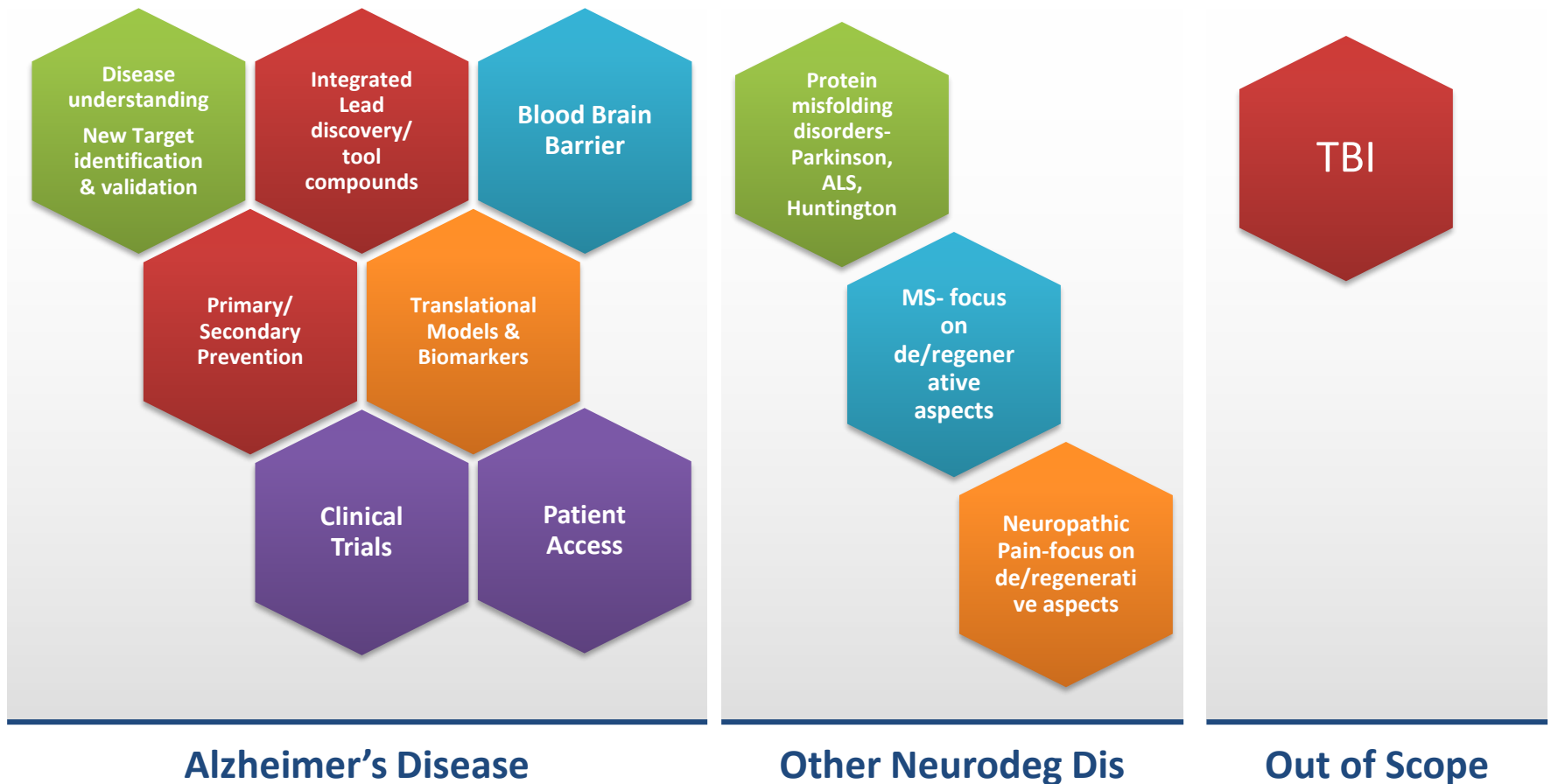
Mission of the SGG Neurodegeneration and other Neuroscience Areas

The mission of the SGG Neurodegeneration is to address the high unmet medical need for effective disease-modifying as well as symptomatic interventions in neurodegenerative disorders in general and Alzheimer's disease in particular.

The comprehensive strategy comprises a detailed investigation of the course of the disease with the aim of identifying and validating **new drug targets and molecules** acting on them as well as **biomarkers** for patient stratification and treatment effect assessment.

The SGG will also drive the development of **new trial methodologies** with novel endpoints as well as supporting infrastructure requirements to **speed up clinical development**, including the early generation of more patient and payer-relevant data so that **access** to effective therapies is facilitated. Ultimately, preventative, curative and/or symptomatic therapies should emerge from research programs supported by the SGG.

Focal Areas IMI2-Neurodegeneration Scientific Governance Group



abbvie

janssen
PHARMACEUTICAL COMPANIES
OF *Johnson & Johnson*

Lilly

AstraZeneca 

 Boehringer
Ingelheim

biogen idec[®]

 **Eisai**

 **GRÜNENTHAL**

 **gsk**
GlaxoSmithKline

Lundbeck 

 **NOVARTIS**

**ORION
PHARMA**

 **Pfizer**

 **Roche**

 **SANOFI**
cipia





 **imi** | innovative
medicines
initiative 6

Public Private Partnerships in dementia (*) today: a Continuum of Collaboration

